

*Mitaka* 三鷹



# MM80 SS1

**SURGICAL MICROSCOPE**

# MM80 SS1



## Compact Size

Maximum functionality with minimum body size. The eyepiece of the compact optical tube is capable of butterfly operation, enabling approach from various angles with excellent handling.



## Rear Assistant (optional)

Allows full stereo view across the table. Can be mounted at same time as side assistant.



## Coaxial Side Assistant (optional)

Three-axis rotation side assistant can be mounted on left or right. Can be mounted at same time as spine assistant.

## SS1 Stand Features



### Compact Design

Smaller stand has less mass and volume.  
Easier for surgeon to move intraoperatively.  
Easier for nurse to position in OR. Easier for all to move around scope in OR.



### Counterbalance

Allows the surgeon to move the device smoothly and quickly with one hand.



### Casters

Even though it is a small stand, it has large twin-wheel casters. Anyone can move it with ease.

# Optics



Distance to the  
affected area  
200 - 600mm

## Working Distance

The compact design of the MM80 creates a wide working space. It provides a comfortable work space for the surgeon with less fatigue even after long hours.



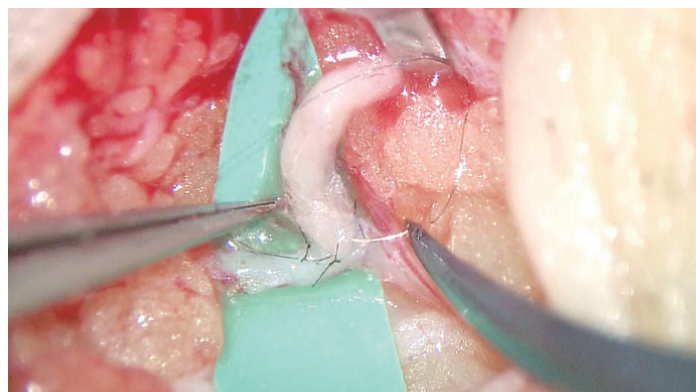
## Magnification

By adopting a 1:8 magnification ratio, native maximum magnification is 23x. Even the smallest anatomy can be reliably captured, enabling highly accurate surgery.



## High Depth of Field

The MM80 platform balances high resolution and magnification with a high depth of field through its unique 8:1 ratio horizontal zoom system that no non-Mitaka microscope utilized.



## Outstanding Brightness

Clearer vision than ever before. It provides clear images even at high magnification, enabling surgeons to operate on vessels of less than 1mm without stress.



## Xenon Lamp

The main lamp is a 300W xenon lamp. Excellent color rendering.



## LED

The spare illumination is a high brightness LED. It ensures stable brightness for a long time.



## Foot Switch

It allows for seamless operation without any extra stepping.



